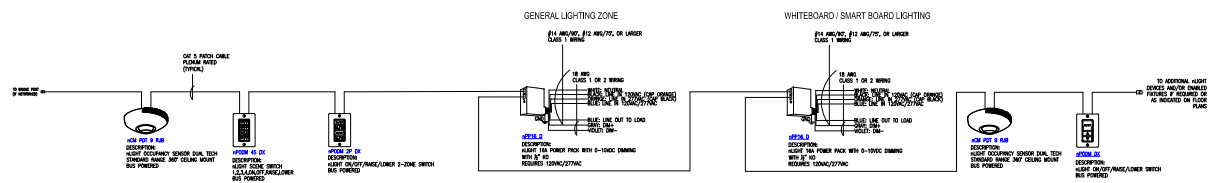


CLASSROOM



TYPICAL CLASSROOM USING nLIGHT POWER PACKS, nPODM 2P - 2-POLE AND nPODM 4S - 4-SCENE SWITCHES (TEACHER CONTROL STATION) AND nPODM DX SWITCH (ENTRY SWITCH)

REFER TO PLANS FOR TYPES AND QUANTITIES

T24 2016 COMPLIANT SEQUENCE OF OPERATION:

1. OCCUPANCY SENSOR PROVIDES PARTIAL ON TO 70% AND AUTOMATIC OFF OF LIGHTS BASED ON ROOM OCCUPANCY (USE DEFAULT TIME DELAY FOR OCCUPANCY SENSOR)
2. nPODM DX SWITCH LOCATED AT ENTRY DOOR PROVIDES MANUAL OVERRIDE FOR ALL LIGHTS: ON/OFF/RAISE/LOWER
3. nPODM 4S SWITCH LOCATED NEAR TEACHER'S DESK PROVIDES MANUAL SCENE CONTROL OF THE LIGHTS: SCENE 1 = GENERAL MODE, SCENE 2 = AV MODE, SCENE 3 = READING, SCENE 4 = QUIET TIME
4. nPODM 2P SWITCH LOCATED NEAR TEACHER'S DESK PROVIDES MANUAL CONTROL OF EACH TYPE OF LIGHTS: ON/OFF/RAISE/LOWER